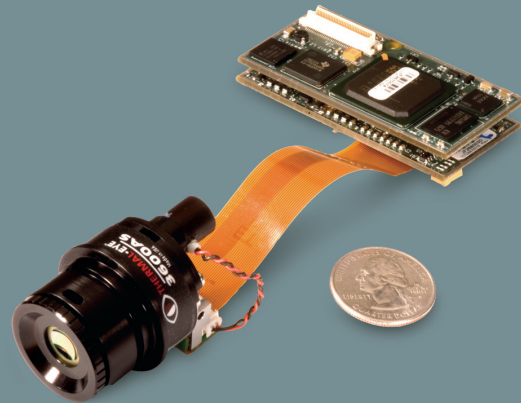


3600AS



The Thermal-Eye 3600AS is our lightest and smallest, long wavelength infrared camera core. It uses proven Amorphous Silicon Microbolometer detector technology with 30µm 160 x 120 pixel array.



SECURITY

MILITARY

PUBLIC SAFETY

FEATURES:

SEAL-READY PACKAGING DESIGN

SMALL SIZE & BEST-IN-CLASS POWER CONSUMPTION

30 MICRON DETECTOR

ADVANCED IMAGE PROCESSING

CUSTOMIZABLE ABSOLUTE COLOR

WORLDWIDE VIDEO COMPATIBILITY

SOPHISTICATED GUIs

OPEN ARCHITECTURE

INTEGRATION SUPPORT

BENEFITS:

Seal-ready optics housing and optics assemblies for easy OEM integration

Smaller CCA size (compared with 3500AS) for improved packaging flexibility & best-in-class <1.2W consumption

Provides real-time 30Hz frame rate plus state-of-the-art thermal sensitivity and dynamic range

Sophisticated histogram-based image processing and 640 x 480 video output resolution for best-in-class image quality at all times

Patent pending non-linear colorization allows OEMs to define multiple color set points for quick, intuitive temperature recognition

Selectable real-time NTSC or full-format PAL video output

Flexible OEM customization

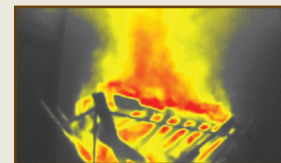
Expansion port provides access to data along video processing chain for advanced OEMs*

Efficient and knowledgeable integration support available

**Contact L-3 at 800-990-3275 and ask for Technical Support to see if you qualify as an advanced OEM*



Perimeter security



Fire scene with customizable absolute color

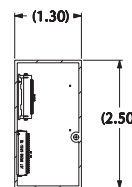
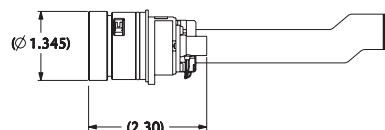
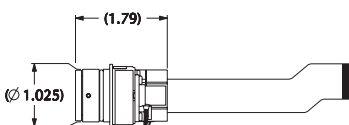
3600AS TECHNICAL SPECIFICATIONS:

FEATURES		THERMAL-EYE 3600AS	THERMAL-EYE 3620AS	THERMAL-EYE 3640AS
FOCAL PLANE ARRAY	MATERIAL, STRUCTURE & FORMAT	Amorphous Silicon Microbolometer (160 x 120 pixel array)		
	SPECTRAL RESPONSE	7-14µm (filter bandwidth)		
	THERMAL SENSITIVITY	<50mK		
	REFRESH RATE	Real-time 30Hz		
THERMAL IMAGING SYSTEM PERFORMANCE	START-UP TIME	2.4 seconds +/-10% (@25°C)		
	CONTRAST/BRIGHTNESS	Automatic/Advanced Image Processing		
	SATURATION TEMPERATURE	1100°F (600°C) +/-10% with automatic electronic iris		
	RANGE TO DETECT HUMAN ACTIVITY	Up to 330ft (100m)	11° FOV: up to 1500ft (475m) 17° FOV: up to 1000ft (305m) 32° FOV: up to 550ft (170m)	Up to 700ft (215m)
OPTICS	FOCAL LENGTH	5.8mm	25mm; 16mm; 8.5mm	11mm
	FIELD OF VIEW	~50° x 37°	~11° x 8°; ~17° x 12°; ~32° x 24°	~25° x 18°
	FOCUS METHOD	Manual/Temperature stabilized	Manual	Manual
VIDEO	ANALOG OUTPUT	NTSC (color): Real-time 30Hz Frame Rate; PAL (color): Real-time 25Hz Frame Rate		
	DIGITAL OUTPUT (OPTIONAL)	Full-resolution, 16-bits (corrected or uncorrected) or 24-bits (RGB color), plus control signals; 30Hz Frame Rate (NTSC) or 25Hz Frame Rate (PAL)		
	OUTPUT RESOLUTION	NTSC: 640 x 480 pixels for higher clarity thermal images & symbology overlay PAL: 768 x 574 pixels for higher clarity thermal images & symbology overlay		
	ABSOLUTE COLOR	3 OEM selectable color points are mapped to absolute temperatures		
POWER	INPUT VOLTAGE	2 to 3.2VDC & 8 to 16VDC		
	INPUT POWER	~1.2W @ 25°C ambient, 3VDC		
CONTROLS	CAMERA SETUP & COMMUNICATION	USB (compatible with the USB 2.0 specifications)		
PHYSICAL CHARACTERISTICS	SIZE	See diagram below		
	WEIGHT	2.38oz. (67.5g)		
	OEM "SEAL-READY" DESIGN*	No	Yes (11° FOV; 17° FOV) No (32° FOV)	No
ENVIRONMENTAL CHARACTERISTICS	OPERATING TEMPERATURE	-4°F to 185°F (-20°C to 85°C)		
	STORAGE TEMPERATURE	-40°F to 221°F (-40°C to 105°C)		
ORDERING INFORMATION	PART NUMBER	50° FOV: 7070030-0001	11° FOV: 7070040-0001 17° FOV: 7070040-0002 32° FOV: 7070040-0003	25° FOV: 7070035-0001
OPTIONAL ACCESSORIES	OEM DEVELOPERS KIT	4000024-0001		
	RS-232 SERIAL INTERFACE CCA KIT	3000224-0001		
ADDITIONAL CAMERA FUNCTIONS	<ul style="list-style-type: none"> – Expansion port with real-time digital video and USB 2.0 compatible control interface (works with USB & hi-speed USB systems, peripherals & cables) – Customizable absolute temperature colorization – White-hot or black-hot polarity selectable – Electronic zoom for 2X to 5X and electronic iris – Selectable temperature indication of scene at central crosshair – Optional GUIs for customization and control (user parameters, symbology overlay, color, real-time control) 			

Specifications subject to change without notice

*Optics/Head is sealed to 3 meter submersion: IEC529, Ipx8

3600AS RevC January 2008



This technical data and software is considered as Technology Software Publicly Available (TSPA) as defined in Export Administration Regulations (EAR) Part 734.7-11.